



**Tadcaster & Villages**  
Community Engagement Forum



# Community Engagement Forum Flyer

## Tadcaster Community Engagement Forum

---

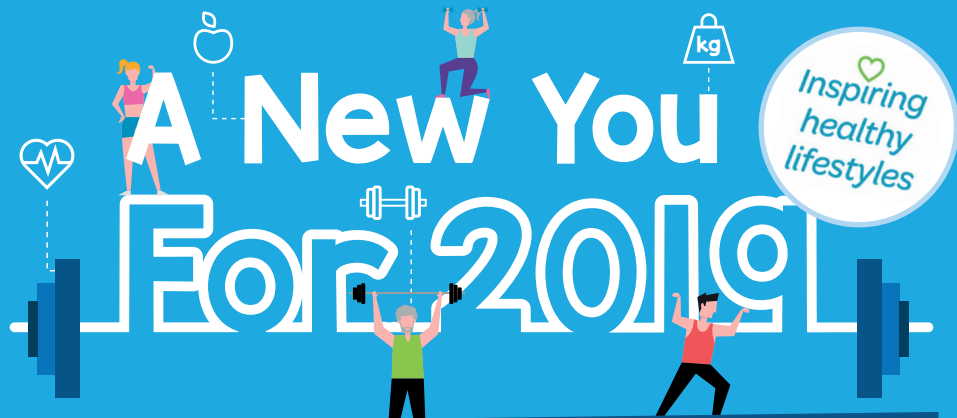
Venue: Riley Smith Hall, Tadcaster  
Date: Monday, 14 January 2019  
Time: 6.30 pm

---

The flyer for the forum is attached below.

For enquires relating to this forum, please contact Victoria Foreman on  
[vforeman@selby.gov.uk](mailto:vforeman@selby.gov.uk) 01757 292046.

# Tadcaster & Villages Community Engagement Forum



The event will include a taster chair based exercise class, led by qualified Fitness Instructor, Elliot

[www.northyorkshiresport.co.uk/strong-and-steady](http://www.northyorkshiresport.co.uk/strong-and-steady)

Inspiring Healthy Lifestyles (IHL) will also talk about their other health/physical activity services.

"Inspiring healthy lifestyles (IHL) are the delivery partner for the Strong and Steady programme in the District of Selby. Their classes aim to build strength and balance in people aged 65 and over through a variety of exercises. In September 2018 IHL launched their first classes, one taking place at Selby Town Hall and the other at Sherburn Community Centre. They are now looking to develop the programme to include a class in a Tadcaster community venue".

**Monday 14th January 2019 at 6.30pm**

**Riley Smith Hall, 28 Westgate, Tadcaster, LS24 9AB**

**FREE Food & Refreshments**

Also at the event you will have the opportunity to speak to your Councillors, staff from Selby District Council, North Yorkshire Highways, North Yorkshire Police, and other Community and Voluntary Organisations

Visit [www.selby.gov.uk/cefs](http://www.selby.gov.uk/cefs) Please contact the Democratic Services team for further information on **01757 705101** or [DemocraticServices@selby.gov.uk](mailto:DemocraticServices@selby.gov.uk)



Tadcaster & Villages  
Community Engagement Forum

## Tadcaster and Villages Community Engagement Forum (CEF) covers the following parishes:

Appleton Roebuck & Acaster Selby; Barkston Ash; Biggin; Bilbrough; Bolton Percy; Church Fenton; Colton & Steeton; Healaugh & Catterton; Little Fenton; Newton Kyme cum Toulston; Oxtun; Saxton with Hazlewood; Tadcaster; Towton, Grimston & Kirby Wharfe with North Milford; and Ulleskelf.



## What is the Community Engagement Forum?

Community Engagement Forums are public meetings at which you can raise any concern or make any comment about your local area and your local services.

The meetings are a chance to speak directly to the people who deliver your local services, for example policing, street cleaning and road safety.

The Partnership Board is made up of District, County, Town, and Parish Councillors, and Community Activists.

## What is the Community Fund?

The CEF receives an annual budget that it can distribute to groups and organisations within the area. There are two types of funding available; grant funding and project funding.

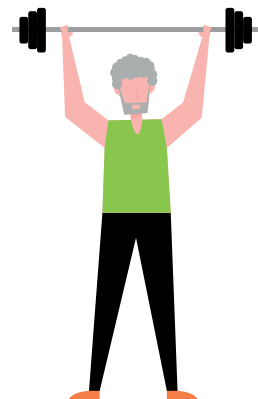
This is a wonderful opportunity to develop new ideas, purchase essential equipment or help to fund community initiatives. Assistance is available to help you plan and complete your application.

## How do you apply?

You can find all the relevant information at [www.selby.gov.uk/tadcaster-villages-cef-funding](http://www.selby.gov.uk/tadcaster-villages-cef-funding)

Once completed, please email it to [cefadmin@selby.gov.uk](mailto:cefadmin@selby.gov.uk)

If you need any assistance, or advice, when making an application please contact our Development Officer, Chris Hailey-Norris at [chris@selbydistrictavs.org.uk](mailto:chris@selbydistrictavs.org.uk)



To find out more about the work of the Tadcaster and Villages CEF please visit [www.selby.gov.uk/cefs](http://www.selby.gov.uk/cefs)